

Tigh-na-acha

8 Western Road, Tobermory,
Isle of Mull, PA75 6RA.
Holidays@tigh-na-acha.co.uk
<https://tigh-na-acha.co.uk>

The Isle of Mull is the second largest Scottish Island and probably the most beautiful. Mull's position in the Inner Hebrides means it is only a 40 minute ferry journey from the Scottish mainland port of Oban, but is far enough away to remain undamaged by tourism. Populated by around 2,500 people, this unspoilt island is home to wildlife unusual to mainland Britain including sea eagles, white tail eagles, golden eagles, otters, puffins, seals, dolphins, orcas and whales.

Much of the island was probably generated by volcanic activity when 60 million years ago a volcano, now Ben More (a Munro standing 966m) exploded and scattered lava adding another layer of geological interest. There are many interesting archaeological sites, standing stones, stone circles, remains of settlements and stone buildings to be found all over Mull enhancing the mystical feel of the island.

Tobermory is located at the north end of the Isle of Mull. During the 18th Century the settlement was used as a fishing port due to the natural harbour. History shows that as far back as 1588 the cove was used as a shelter for a Spanish galleon which if rumours are to



be believed, mysteriously caught fire and sunk taking its cargo of gold coins and treasures which brings divers back to Mull.

Now Tobermory is by far the largest village on the island and as you can see, colourful houses, cafés, pubs and shops adorn the picture postcard harbour front.

Whether you are walking, fishing, golfing, nature

watching, relaxing or exploring, Tobermory makes the perfect place stay with everything on the island within easy reach.

Tigh-na-acha was built in 1978 and is located some way up Druim na Sroine-Cruime, the hill which helps to protect the harbour.

From the cottage there are stunning views across the harbour where there are always many colourful boats moored.

On the far side of the harbour you can see Aros Park (Forestry and Land Scotland), with its trees, lakes and waterfalls.



Look South and see some of Ben More and some of Mull's other mountains and South West over Calve Island down the Sound of Mull where the views are often glorious.

The main street has many shops, restaurants, bars and coffee shops. The shops provide (amongst many other things) provisions, Arts and Crafts, children's games, warm clothes, fishing tackle and a pharmacy. There is also a museum, an RNLI shop and a Hebridean Whale & Dolphin Trust.

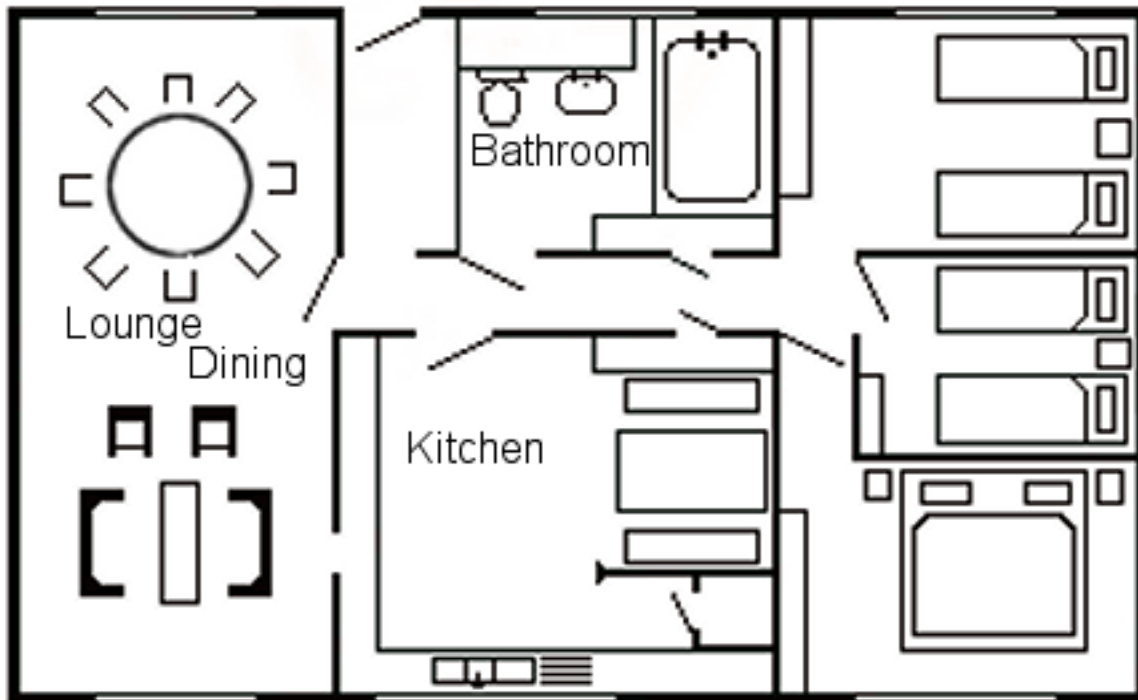


There are always goings-on in the harbour to watch.

On the left hand side as you look out to sea you will find the main pier which houses a great local fish café / restaurant. In the middle is the market for provisions, and on the right hand side is the Ledaig car park, Tobermory Distillery, Petrol station and Visitor Centre where you can book day trips to other parts of the island, or even other islands like Ulva, Iona and Staffa.

About the cottage

Tigh-na-acha is comfortably furnished and well equipped, here is the floor plan. Please see the Accommodation section on <https://tigh-na-acha.co.uk> for an interactive floor plan with more detail, pictures of all the rooms and views from the outside.



The Lounge / Living room is carpeted and includes:

- Wood / coal burning fire
- Convection heaters
- Large dining table with chairs
- Television with Freeview
- Television will play videos from a USB stick
- Television has Chromecast player
- Alexa smart speaker useful for weather updates, worldwide radio, etc.
- Stand alone Radio / CD / Tape player
- Comfortable sofa and separate easy chair
- Large coffee table
- Serving hatch into the Kitchen
- Views over Tobermory Harbour
- Selection of fiction books and games
- Selection of local maps and books about Mull
- Internet connection via wifi router, details attached to the router

The kitchen benefits from:

- Breakfast area seating
- Electric oven and hob (please turn on at the wall)
- Sink, washing up liquid, dish clothes, drying up cloths
- Kettle
- Fridge / Freezer
- Microwave
- Washing machine
- Cooking utensils, knives, tin openers, etc.
- Cutlery, crockery, cups and dishes
- French press / cafetière for ground coffee
- Immersion heater switch

The bedrooms contain:

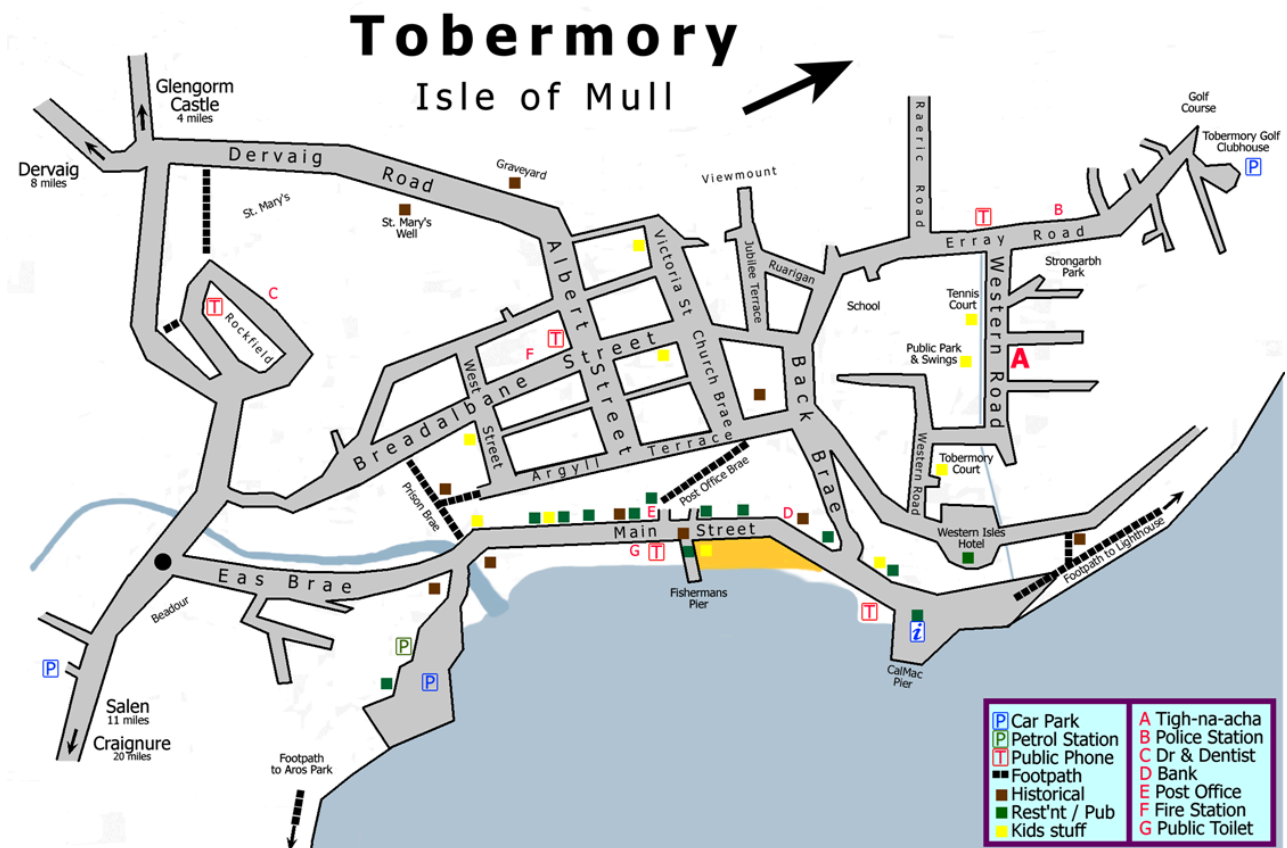
- One double bed
- Four single beds
- Built-in wardrobes in each
- Bedside tables in each
- All bed linen and pillows are provided
- Hair dryer in the main bedroom

The bathroom has:

- Bath
- Bath towels are provided, though please bring your own beach towels
- Power Shower
- Extractor fan
- Toilet
- Wash basin
- Shaver point
- Wall mounted heater

An immersion heater supplies the hot water, and convection heaters are provided in the living room, bathroom and all bedrooms.

Map of Tobermory



Cottage Guidelines

1. The cottage will be available from 16:00 on the day you start your holiday.
2. Please vacate the cottage by 10:00 on your final day.
3. The front door key will be in the key-safe by the front door, the code is provided in your welcome email.
4. Please return the key to the key-safe at the end of your stay.
5. Cars can be parked off the road in front of the cottage.
6. A folder is in the kitchen drawer containing instructions for the equipment.
7. The dustman collects each Thursday. Please could you put the bin by the road and return it when emptied. Thank you again!
8. Please note that pets cannot be accommodated.
9. Please enjoy yourselves, and if you have any questions, please get in touch.